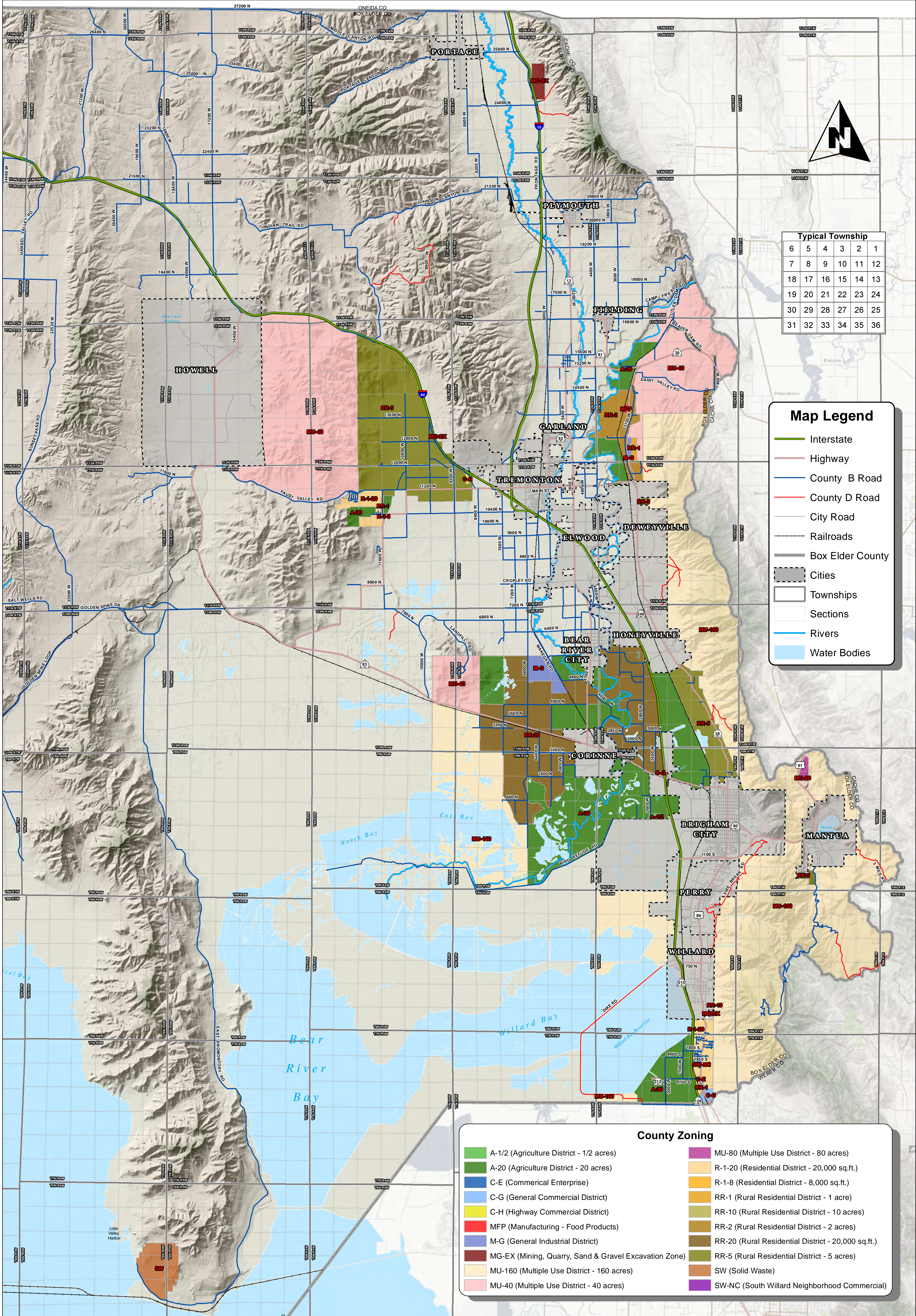


Box Elder County Zoning East



Typical Township

6	5	4	3	2	1
7	8	9	10	11	12
18	17	16	15	14	13
19	20	21	22	23	24
30	29	28	27	26	25
31	32	33	34	35	36

Map Legend

- Interstate
- Highway
- County B Road
- County D Road
- City Road
- Railroads
- Box Elder County
- Cities
- Townships
- Sections
- Rivers
- Water Bodies

County Zoning

 A-1/2 (Agriculture District - 1/2 acres)	 MU-80 (Multiple Use District - 80 acres)
 A-20 (Agriculture District - 20 acres)	 R-1-20 (Residential District - 20,000 sq.ft.)
 C-E (Commerical Enterprise)	 R-1-8 (Residential District - 8,000 sq.ft.)
 C-G (General Commercial District)	 RR-1 (Rural Residential District - 1 acre)
 C-H (Highway Commercial District)	 RR-10 (Rural Residential District - 10 acres)
 MFP (Manufacturing - Food Products)	 RR-2 (Rural Residential District - 2 acres)
 M-G (General Industrial District)	 RR-20 (Rural Residential District - 20,000 sq.ft.)
 MG-EX (Mining, Quarry, Sand & Gravel Excavation Zone)	 RR-5 (Rural Residential District - 5 acres)
 MU-160 (Multiple Use District - 160 acres)	 SW (Solid Waste)
 MU-40 (Multiple Use District - 40 acres)	 SW-NC (South Willard Neighborhood Commercial)